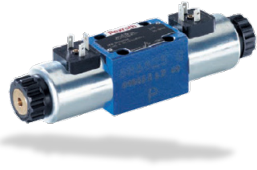


Industrial Hydraulic Control Valves - HPP and MPP Product Program



High Performance Product Example
.WE6..6X/E..

- Surpassing hydraulic performance
- Full selectable variance
- Various certificates
- Extra robust and reliable



Medium Performance Product Example
.WE6..1X/H..

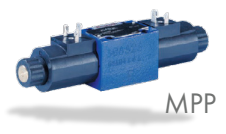
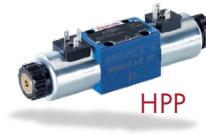
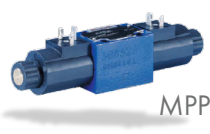
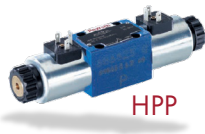
- High volume market adapted hydraulic performance
- Limited number of valve types
- Suitable price for targeted markets and applications



Scan for data sheet

When should I use an MPP valve?

- MPP products are tailored to specific / new markets / new business
- NEW business - in price sensitive applications, to meet market acceptable price
- To keep existing business when at RISK
- NOT Intended to replace HPP products
- It is NOT Form Fit Functional replacement of HPP Valves



		.WE6..6X/E..	.WE6..1X/H..
Data Sheet Market		23178 Global	23165 Global
Max. operating pressure	[bar]	Port P, A, B: 350 Port T: 210 (DC), 160 (AC)	Port P, A, B: 350 Port T: 210
Max. flow	[l/min]	80 (DC), 60 (AC)	80
Spool types	[-]	full variance of spool types	selected spool types
Temp range	[°C]	-20 ... +80 (NBR seals) -15 ... +80 (FKM seals) -20 ... +50 (HFC hydraulic fluid) -40 ... +50 (low-temp)	-20 to +80 (NBR seals)
Corrosion protection	[h]	0, 240, 720	none

		.WE6..6X/E..	.WE6..1X/H..
Voltage	[V]	DC: 12, 24, 96, 205 AC: 110, 230 (50/60 Hz)	DC: 24
Electrical connection	[-]	Single: K4, K4K, K40, K72L, K73L, C4Z Central: DL, D1, DAL, DAL1, DK6L, DK6L1, DK23L, DK25L; DK24L, DK24L1, DK35L	K4
Dimensions L x B x H	[mm]	206 x 45 x 51	213 x 45 x 48
Certifications	[-]	LVD 2014/35/EU ATEX 2014/34/EU CSA UR coils	none