

# Solution Minded. Customer Focused.

## FIELD SERVICE & REPAIR SERVICES INCLUDE:

- Factory-trained service technicians
- Long-term solutions
- Prompt communication
- Attention to detail
- Warranty on repaired items
- 24/7 service & repair

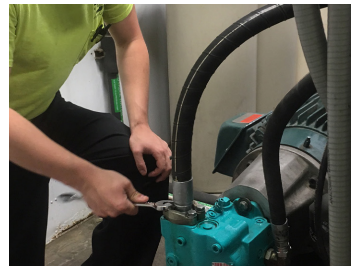
After completing repairs, our technicians use cutting-edge diagnostic equipment to evaluate performance and recommend additional solutions.

We have developed an advanced Field Service & Repair system to bring our technicians and technology to you. With sophisticated data acquisition hardware and software, we can diagnose, troubleshoot, and perform repairs at your location.

Our factory-trained service technicians have years of experience repairing and evaluating hydraulic equipment and continue to broaden their expertise by attending factory training programs. You can be sure to receive a product that will work once it has been reinstalled into your system.

Whether you need a Servo/Proportional, a directional valve or piston pump repaired, our Field Service & Repair group is ready to assist.

We service any kind of hydraulic component.



## 24/7 SERVICE

Visit [fscinc.com/service-and-repair](https://www.fscinc.com/service-and-repair) to obtain an RMA number and printable packing slip for all your serviceable items.

920-337-0234

## PROVIDING LONG-TERM SOLUTIONS

Our technicians work to diagnose the source of the problem and recommend solutions to prevent future component and system failures, as well as maximize equipment productivity.

## WARRANTY ON REPAIRED ITEMS

Our Field Service & Repair group warrants its repairs to be free of defective materials and workmanship. This warranty period is equal to the original manufacturer's new warranty from date of invoice. FSC technicians are factory-trained and authorized to perform warranty service on industrial and mobile components by Rexroth.

## ATTENTION TO DETAIL

Our technicians complete a detailed failure analysis on each unit we service. Customers are informed of probable causes, potential solutions, and available options and can then decide whether the best decision involves repair or replacement. Our attention to detail saves your company money now and in the future.

## PROMPT COMMUNICATION

From inspection to service completion, the Field Service & Repair group is committed to communicating the status of your service order and seeking your input. Because of our strict standards, you can rely on FSC to do the job properly the first time.

## AUTOMATION TECHNOLOGIES

Our automation group provides engineering design assistance and technical support for all your automation and control needs. Products include linear bearing systems, gantry style robotic systems with HMI interfaces, and a full line of servos and controls. Our mission is to optimize motion control systems for the best time, cost, and lifecycle management. We can also provide project design and assembly for modular framing structures.

## STANDARD & CUSTOM POWER UNIT SYSTEMS

FSC provides:

- Horizontal, horizontal JIC, vertical, overhead, L-style, and other custom power units with special design reservoirs, valves, and accessories installed and piped
- Rexroth Standard systems up to 100 gpm
- Fully staffed in-house engineering team offers a turnkey custom system up to 2000 gallons & 10,000 psi
- AC and DC power units, AC miniature power units, and DHP power packs

## ENGINEERING, INSTALLATION, START-UP & ASSEMBLY

FSC designs using 3D CAD software, builds, installs, and does start-up on all hydraulic, pneumatic, lubrication, and motion control systems regardless of where purchased, using fully qualified tech teams. Our trucks feature on-board generators and a full stock of materials to set up shop anywhere. Trucks are outfitted to plumb up to 2" seamless steel and stainless steel tubing on flared, bitetype, or face seal type connections. We also cut and crimp up to 2" high pressure hoses.

## FIELD SERVICE & REPAIR

- Factory-trained technicians are available 24/7 for troubleshooting, fluid analysis, and sampling on-site repair services, field upgrades and retrofitting, or high pressure plumbing services.
- We repair any manufacturer's hydraulic component, fully tested to specifications, and meet your operating requirements.
- We are authorized Rexroth and Lincoln Industrial repair centers.
- On-site telescopic cover repair.
- Specialists in piston pump/motor, servo, and valve repairs.





<b>DE PERE</b>	<b>NEW BERLIN</b>
1700 Suburban Drive De Pere, WI 54115	2315 S. 170th Street New Berlin, WI 53151
Phone: (920) 337-0234 Fax: (920) 337-0577	Phone: (262) 827-2700



fscinc.com

# FIELD SERVICE & REPAIR



[fscinc.com/service-and-repair](https://fscinc.com/service-and-repair)